



COMPANY PROFILE





**“THE VALUE OF AN IDEA
LIES IN THE USING OF IT”**

— THOMAS EDISON —

CEO MESSAGE



I am privileged to lead a company that is not just in the business of providing products and services, but one that is dedicated to making a positive impact on the world around us. Our journey has been marked by countless achievements, challenges overcome, and lessons learned, all of which have shaped us into the company we are today.

AT 3PHASE ENTERPRISES, our mission is clear: to deliver excellence in everything we do. From providing top-quality products to delivering exceptional services, we are committed to exceeding the expectations of our customers and partners. We take pride in our ability to innovate, adapt, and evolve to meet the ever-changing needs of our industry.

As we look to the future, we are excited about the opportunities that lie ahead. We are confident that with the dedication and talent of our team, combined with the support of our partners and stakeholders, we will continue to achieve success and make a positive impact on the world.

THANK YOU FOR CHOOSING 3PHASE ENTERPRISES, WHERE EXCELLENCE MEETS INNOVATION.



ABDUL WAHEED
CEO



ABOUT US



3PHASE ENTERPRISES formerly known as JN International was established in 2007 with a vision to meet the diverse needs of communication, industrial, & residential clients. We as a leading provider of comprehensive electrical solutions have built a reputation of excellence in delivering innovative, reliable, and sustainable electrical products and services to our valued customers.

Core Values:

- Excellence
- Innovation
- Integrity
- Safety
- Sustainability



VISION STATEMENT



At 3Phase Enterprises, we envision a future where our comprehensive electrical solutions redefine industry standards. We are committed to being the premier provider, tailoring our services to meet the unique needs of our commercial, industrial, and residential clients. Our goal is to illuminate every project with innovation, reliability, and excellence, setting the benchmark for electrical excellence and every space we touch.



MISSION STATEMENT

Our mission at 3Phase Enterprise is to be the trusted leader in providing comprehensive electrical solutions to commercial, industrial, and residential clients. We are dedicated to upholding our reputation of excellence by delivering innovative, reliable, and sustainable products and services that exceed the expectations of our valued customers. Through our commitment to quality, safety, and customer satisfaction, we empower businesses and communities to thrive in an electrified world.



SERVICES

01 Installation and Maintenance:

We offer professional installation services for electrical systems, equipment, and infrastructure, ensuring optimal performance and longevity. Additionally, we provide ongoing maintenance and support to keep their electrical systems operating at its peak.

02 Product Sales:

We supply a comprehensive range of high-quality electrical products from leading manufacturers, including switch gear, wiring, lighting fixtures, circuit breakers, switches and more.

03 Energy Efficiency Solutions:

Our energy efficiency solutions help clients to reduce energy consumption, lower utility costs, and minimize environmental impact through the implementation of energy-efficient technologies and practices.

04 Emergency Response:

We offer 24/7 emergency response services to address electrical issues promptly and minimize downtime for our clients.

05 Consultation and Design:

Our team of expert engineers and consultants collaborate closely with clients to understand their specific requirements and develop tailored electrical designs and solutions.



CLIENTELE



- Commercial enterprises
- Industrial facilities
- Residential developments
- Educational institutions
- Healthcare facilities
- Government agencies
- Retail establishments
- Hospitality industry



WHAT WE DO



1. Electrical Solutions & Supply

From electrical wiring and distribution to lighting, automation, and energy management solutions, we strive to be the one-stop destination for all electrical needs. Our scope of work includes :

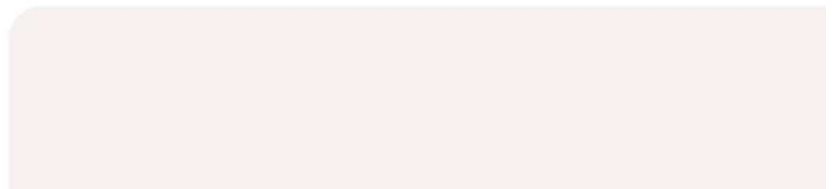
- HT/LT panels
- Electrical panels / Distribution Boards
- Breakers
- Power Cables – Complete Range
- Telephone & Data Cabling
- Switches & Sockets
- Complete lighting Solution
- Floor Box



Switchgear

3Phase Enterprises offers a comprehensive range of switchgear solutions designed to meet the diverse requirements of our clients. Backed by cutting-edge technology, experienced professionals, and a commitment to excellence. Our scope of work includes:

- Extensive Product Portfolio
- Customization Capabilities
- Quality Assurance
- Technical Expertise
- Customer Support and Service



WHAT WE DO



2. Mechanical Solutions & Supply

3Phase Enterprises commits to innovation, reliability, and customer satisfaction, we specialize in offering a wide range of mechanical components, equipment, and services tailored to meet the unique needs of our clients. Our scope of work includes:

- Ducting Solution
- Cable Trays
- Cable Ladders
- Steel Structures
- Electrical & Street poles
- Complete HVAC Solution



3. Lifts / Elevators

3Phase Enterprises covers a range from passenger elevators and freight lifts to accessibility lifts and custom elevator solutions, we strive to be the preferred partner for all vertical transportation needs. our scope of work includes:

- Passengers Lifts
- Cargo Lifts
- Bed Lifts
- Villa / Home Lifts





4.ELV Solutions & Supply

3Phase Enterprises is a premier provider of cutting-edge Extra-Low Voltage (ELV) solutions and high-quality equipment. Aiming at residential, commercial, and industrial clients. We specialize in offering a wide range of ELV systems, components, and services tailored to enhance safety, efficiency, and connectivity in various environments. We deal in following solutions:

- Fire Alarm System (FAS)
- Earthing & lightning Protection System
- Public Address System
- Nurse Call System
- Access Control System
- Queue Management System
- CCTV



WHAT WE DO



Fire Alarm System

3Phase Enterprises is a leading provider of innovative fire alarm systems and life safety solutions, committed to protecting lives and property through advanced technology and exceptional service. With years of experience in the fire protection industry, we specialize in designing, installing, and maintaining state-of-the-art fire alarm systems tailored to the unique needs of our clients. Our scope of work includes:

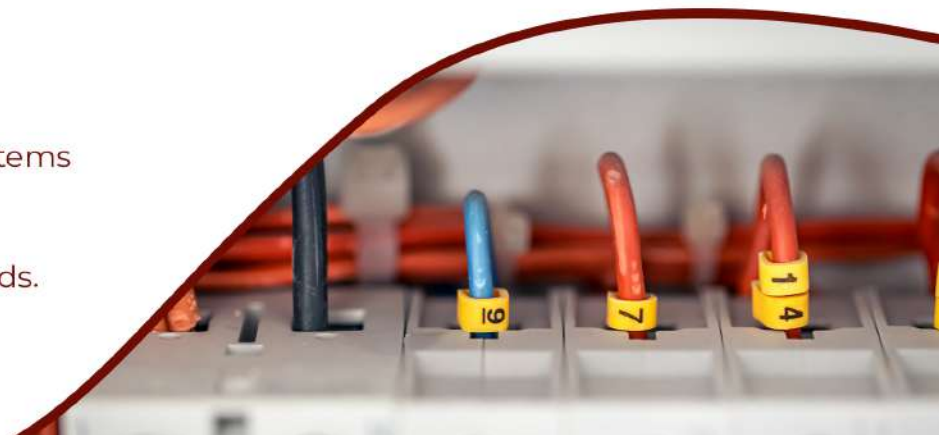
- Advanced Fire Alarm Systems:
- Customized Solutions
- Comprehensive Services
- Regulatory Compliance
- Industry Experience



Earthing & lightning protection System

3Phase Enterprises is a trusted provider of comprehensive earthing and lightning protection solutions, dedicated to ensuring the safety and reliability of electrical systems and infrastructure. With a focus on innovation, quality, and customer satisfaction, we specialize in designing, installing, and maintaining state-of-the-art earthing and lightning protection systems tailored to the specific needs of our clients. our scope of work includes:

- Earthing Systems
- Lightning Protection Systems
- Customized Solutions
- Compliance and Standards.
- Service and Support



WHAT WE DO



Public Address System

3Phase Enterprises is a leading provider of advanced public address (PA) systems and audio communication solutions, dedicated to enhancing public safety, information dissemination, and entertainment experiences in various environments. With a focus on innovation, reliability, and customer satisfaction, we specialize in designing, installing, and servicing state-of-the-art PA systems tailored to the unique needs of our clients. Our expertise includes:

- Public Address Systems
- Customized Solutions
- Integration Capabilities
- Compliance and Standards
- Service and Support



Nurse Call System

3Phase Enterprises is a leading provider of advanced nurse call systems and healthcare communication solutions, dedicated to enhancing patient care, safety, and efficiency in healthcare facilities. With a focus on innovation, reliability, and customer satisfaction, we specialize in designing, installing, and servicing state-of-the-art nurse call systems tailored to the unique needs of hospitals, nursing homes, assisted living facilities, and other healthcare environments. Our scope of work includes:

- Advanced Nurse Call Systems
- Customized Solutions
- Integration Capabilities
- Compliance and Standards
- Service and Support



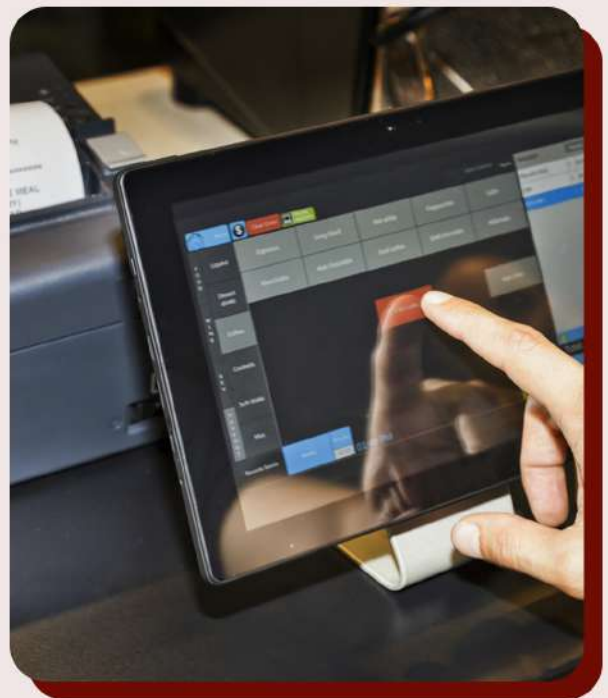
WHAT WE DO



Queue Management

3Phase Enterprises is a leading provider of innovative queue management systems, dedicated to improving customer service, efficiency, and satisfaction in various industries. With a focus on cutting-edge technology, reliability, and customer-centric solutions, we specialize in designing, implementing, and supporting state-of-the-art queue management systems tailored to the unique needs of our clients. Our scope of work includes:

- Queue Management Systems
- Customized Solutions
- Integration Capabilities
- Compliance and Standards
- Service and Support



WHAT WE DO



5. Solar Solutions

3Phase Enterprises. is a leading provider of innovative solar energy solutions, committed to delivering sustainable and cost-effective renewable energy solutions for residential, commercial, and industrial clients. With a focus on cutting-edge technology, quality craftsmanship, and exceptional customer service, we specialize in designing, installing, and maintaining state-of-the-art solar photovoltaic (PV) systems tailored to the unique needs of our clients. Our scope of work includes:

- Solar Photovoltaic (PV) Systems
- Customized Solutions
- Quality Assurance
- Financing Options
- Ongoing Support



WHAT WE DO



6. Power Sector

Our scope of work includes:

- Supply of Generators
- Service & Parts
- Repair & Maintenance
- UPS & AVR's

7. General Order Supplies

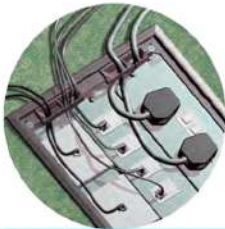
3phase Enterprises is a leading provider of comprehensive electrical procurement solutions, specializing in supplying high-quality electrical materials and equipment to residential, commercial, and industrial clients.



UNDERFLOOR TRUCKING SYSTEM



CP470
SERVICE
BOX



Flap Handle with Cable Retainer

- enable the trap to be shut flat while cable protruding safely through the grommet.

Levelling System

- to adapt to final floor level by a max upward lift of 12mm.

Compartment Segregation

- boxes available in 1, 2 and 3 compartments.

Basic Box

- screed depths:
- rated IP30 in accordance with BS EN 60529.
- provided with disposable lid to prevent ingress during screeding.

Trap and Frame

- 6mm recess.
- available in metal and die-cast alloy.
- trap is prevented from detachment by a unique hinge mechanism.
- sizes 125x125 & 125x250 available in pre-galvanized steel sheets with epoxy finish.
- trap opens up to 180° flat.

Frame

- flanged edge to prevent carpet from fraying out.

90° Box Rotation

- via brackets that can be installed in either of 2 sides (for square box only).

Side Plates

- come with perforation to accept trunking and knockout holes pierced to accept 20mm conduits (25mm trunking height) or 25mm conduits (38mm trunking height).

Base Plate Fixing

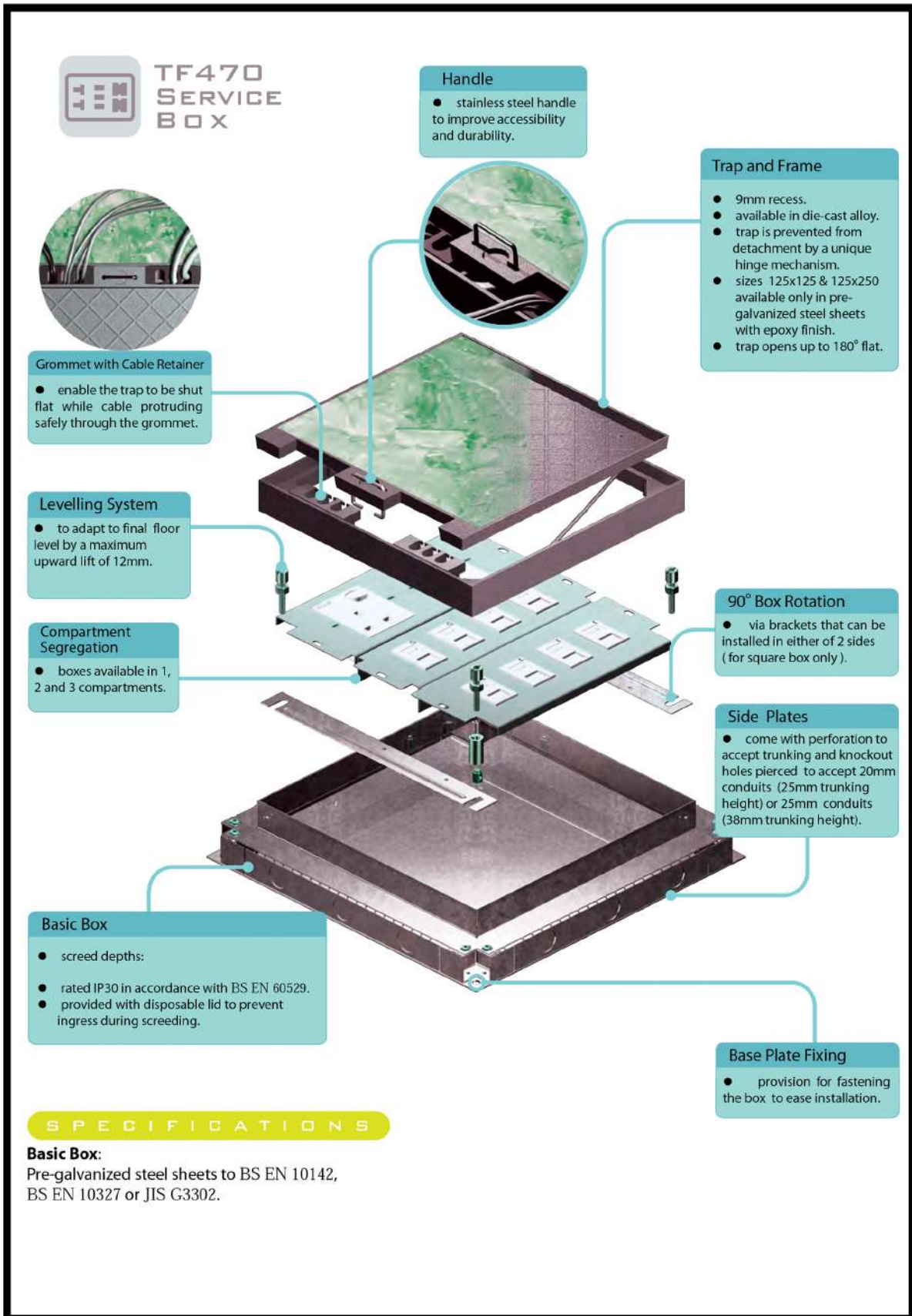
- provision for fastening the box to ease installation.

SPECIFICATIONS

Basic Box:

Pre-galvanized steel sheets to BS EN 10142, BS EN 10327 or JIS G3302.

UNDERFLOOR TRUCKING SYSTEM



UNDERFLOOR TRUCKING SYSTEM



QUANTEC
SERVICE
BOX

Handle

- stainless steel handle to improve accessibility and durability.

Grommet with Cable Retainer

- enable the trap to be shut flat while cable protruding safely through the grommet.

Flanged Frame

- to prevent carpet from fraying out.

Compartment Segregation

- boxes available in 1, 2 and 3 compartments.

Basic Box

- screed depths:
- rated IP30 in accordance with BS EN 60529.
- provided with disposable lid to prevent ingress during screeding.
- optional side plate pierced to accept 20mm and 25mm conduits are also available.

Quantec Trap and Frame

- 6mm recess.
- made of flame retardant, high impact ABS plastic.
- trap is prevented from detachment by a unique hinge mechanism.
- trap opens up to maximum 80° and is self-closing.
- colour comes in light grey.
- trap is reinforced with pre-galvanized steel sheets infill plate for maximum strength and durability.

Flap Cover

- retractable when not in use and to prevent the ingress of dust.

Levelling System

- to adapt to final floor level by a maximum upward lift of 12mm.

Base Plate Fixing

- provision for fastening the box to ease installation.

SPECIFICATIONS

Basic Box:

Pre-galvanized steel sheets to BS EN 10142, BS EN 10327 or JIS G3302.

UNDERFLOOR TRUCKING SYSTEM



CP270/xxx



QUFSxxx

CP270 6MM RECESS

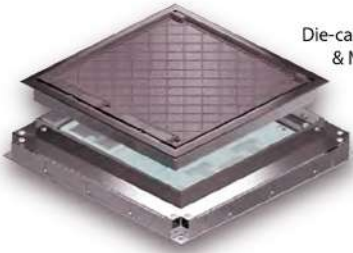
L X W X H (mm)	Model		Trk Entry W X H (mm)
	2 Compart.	3 Compart.	
270X230X56	CP270/225/2/25	CP270/225/3/25	225X25
270X230X69	CP270/225/2/38	CP270/225/3/38	225X38
270X230X56	CP270/250/2/25	CP270/250/3/25	250X25
270X230X69	CP270/250/2/38	CP270/250/3/38	250X38

* The trap and frame are moulded from flame retardant engineering plastics (Nylon 66) reinforced with pre-galvanized steel sheets infill plate.

QUANTEC 6MM RECESS

L X W X H (mm)	Model		Trk Entry W X H (mm)
	2 Compart.	3 Compart.	
339X244X56	QUFS225/2/25	QUFS225/3/25	225X25
339X244X56	QUFS250/2/25	QUFS250/3/25	250X25
339X244X56	QUFS300/2/25	QUFS300/3/25	300X25
339X244X69	QUFS225/2/38	QUFS225/3/38	225X38
339X244X69	QUFS250/2/38	QUFS250/3/38	250X38
339X244X69	QUFS300/2/38	QUFS300/3/38	300X38

* The trap and frame are moulded from high impact flame retardant ABS plastic reinforced with pre-galvanized steel sheets infill plate.

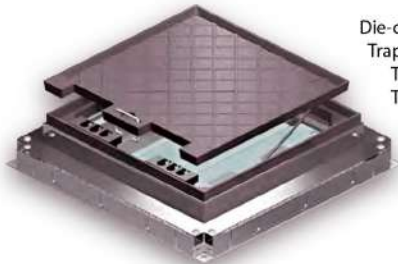


Die-cast Alloy Trap & Nylon Frame CP470/xxx

DIE-CAST ALLOY 6MM RECESS

L X W X H (mm)	Model		Trk Entry W X H (mm)
	2 Compart.	3 Compart.	
250X250X56	CP470/2/25	CP470/3/25	225X25
250X250X69	CP470/2/38	CP470/3/38	225X38

* The trap is made of high pressure die-cast alloy. The frame, grommet handles and hinges are moulded from flame retardant engineering plastics (Nylon 66) to give greater mechanical strength.



Die-cast Alloy Trap & Frame TF470/xxx TF370/xxx

DIE-CAST ALLOY 9MM RECESS

L X W X H (mm)	Model		Trk Entry W X H (mm)
	2 Compart.	3 Compart.	
250X250X56	TF470/2/25	TF470/3/25	225X25
300X300X56	TF370/2/25	TF370/3/25	300X25
250X250X69	TF470/2/38	TF470/3/38	225X38
300X300X69	TF370/2/38	TF370/3/38	300X38

* The trap and frame are made of high pressure die-cast alloy.

Metal Trap & Frame UFS125/xxx



Metal Trap & Frame UFS125250/xxx



METAL 125X250 9MM RECESS

L X W X H (mm)	Model		Trk Entry W X H (mm)
	1 Compart.	2 Compart.	
125X250X56	UFS125250/1/25/M/9	UFS125250/2/25/M/9	125 / 250X25
125X250X69	UFS125250/1/38/M/9	UFS125250/2/38/M/9	125 / 250X38

METAL 125X125 9MM RECESS

L X W X H (mm)	Model	Trk Entry W X H (mm)
	1 Compart.	
125X125X56	UFS125/1/25/M/9	125X25
125X125X69	UFS125/1/38/M/9	125X38

* The metal type trap & frame are made from 1.6mm pre-galvanized steel sheets with epoxy finish.

LETTER OF COMMENDATION



INTERNATIONAL ENGINEERS

Chartered Electrical Engineers & Consultants
A/1 Sea Breeze Homes, Sher Shah Block New Garden Town Lahore, Pakistan.
Ph:- 092-42-35869793, Fax: 092-42-35833931
e-mail:- inteng91@yahoo.com, ie@ international-engineers.com
Website:www.international-engineers.com

Subject: Recommendation Letter for 3Phase Enterprises

Dear Mr. Abdul Waheed,

I am writing to highly recommend 3Phase Enterprises based on my experiences working with them as an electrical consultant. Over the course of our collaboration, I have been consistently impressed by their professionalism, expertise, and commitment to excellence.

3Phase Enterprises has distinguished itself as a one of the growing company in the electrical industry by providing exceptional products and services. Their team of skilled professionals demonstrates a deep understanding of electrical systems and technologies, allowing them to deliver innovative solutions tailored to meet the unique needs of their clients.

One aspect of 3Phase Enterprises that particularly stands out is their dedication to customer satisfaction. They go above and beyond to ensure that their clients receive the highest level of service, from the initial consultation to the final installation and beyond. Their responsiveness, attention to detail, and willingness to address any concerns or challenges are truly commendable.

Furthermore 3Phase Enterprises maintains a strong commitment to quality and safety in all aspects of their work. They adhere to industry best practices and standards, ensuring that their products and installations meet or exceed regulatory requirements. This commitment to excellence instills confidence in their clients and sets them apart as a trusted partner in the electrical field.

In summary, I wholeheartedly endorse 3Phase Enterprises as a reliable and reputable provider of electrical products and services. Their professionalism, expertise, and dedication to customer satisfaction make them a valuable asset to any project or organization.

Thank you, 3Phase Enterprises, for your continued dedication to excellence in the electrical industry. I look forward to the opportunity for future collaboration and success together.

Sincerely,

INTERNATIONAL ENGINEERS

(MAQSOOD AHMAD)

(CHIEF EXECUTIVE)

P.E. (PEC) MIEE (UK)

Cell No. 0300-8406801

LETTER OF COMMENDATION



Mr. Abdul Wahed,
M/s 3Phase Enterprises.

Dated: Mar 14th, 2024
Ref: RA/MM/241023

Subject: Recommendation Letter for 3Phase Enterprises

Dear Mr. Abdul Waheed,

I am writing to express my sincere appreciation for the exemplary services provided by 3Phase Enterprises as a trusted partner in the field of electrical solutions. As an electrical consultant with extensive experience in the industry, I have had the privilege of collaborating with numerous suppliers, and I can confidently attest to the outstanding professionalism, expertise, and dedication exhibited by your company.

3Phase Enterprises has consistently demonstrated a commitment to excellence, offering a comprehensive range of electrical products and solutions sourced from various reputable brands. Their extensive product portfolio, coupled with their in-depth knowledge of the market, enables them to effectively meet the diverse needs and requirements of clients across different sectors and industries.

Furthermore, I have been particularly impressed by the level of customer service provided 3Phase Enterprises. Their team of knowledgeable and responsive professionals is always readily available to offer expert guidance, technical support, and assistance, ensuring that clients receive the highest standard of service from initial inquiry to post-sales support.

In addition to their exceptional product offerings and customer service, 3Phase Enterprises consistently upholds the highest standards of reliability, efficiency, and integrity in all their operations. Their commitment to delivering quality products and solutions, coupled with their adherence to industry regulations and standards, reflects their unwavering dedication to client satisfaction and safety. Based on my extensive experience working with 3Phase Enterprises, I have no hesitation in recommending them as a preferred partner for anyone seeking reliable and high-quality electrical products and solutions. Their professionalism, expertise, and commitment to excellence truly set them apart in the industry.

Thanking you in anticipation;

Regards,
For Raahim Associates



Usama Asif
MD

Off#7-8, Sheraz Plaza, Main Market, Gulberg-II, Lahore (Ph#042-35761814)

LETTER OF COMMENDATION



3Phase Enterprises.
409 A-1 Johar Town,
Lahore, Pakistan.

Dear Mr. Abdul Waheed,

I am writing on behalf of Yum group of restaurants to express our sincere appreciation for the outstanding service and products provided by your electrical firm. We have been consistently impressed with the quality and reliability of your services, which have significantly contributed to the success of our operations.

Your team's professionalism, expertise, and commitment to excellence have been evident in every interaction we have had with your company. From providing top-notch electrical equipment to offering prompt and efficient maintenance services, you have consistently exceeded our expectations.

We value the strong partnership we have developed with your firm and look forward to continuing to work together in the future. Your dedication to customer satisfaction is truly commendable, and we are grateful for the invaluable support you have provided to our business.

Please extend our gratitude to all members of your team who have played a role in delivering exceptional service to us. We are confident that with your continued partnership, we will achieve even greater success.

Thank you once again for your outstanding service and commitment to excellence. We look forward to many more years of collaboration and mutual success.

Warm Regards,
Nisar Ahmed
Executive Director
Yum Group of Restaurant



LETTER OF COMMENDATION

PAPA JOHNS Better Ingredients. Better Pizza.

Subject: Appreciation for 3Phase Enterprises.

Dear Mr. Abdul Waheed,

I am writing to express my sincere appreciation and gratitude to 3Phase Enterprises for the outstanding services and support provided to our organization. Your commitment to excellence and professionalism have truly made a difference in our projects.

Throughout our collaboration 3Phase Enterprises has consistently demonstrated a high level of expertise and dedication in delivering top-notch electrical solutions. From the initial consultation to the final implementation, your team has shown exceptional attention to detail and a thorough understanding of our needs.

Moreover, I would like to commend 3Phase Enterprises for their reliability and responsiveness. Whenever we had questions or concerns, your team was always available to provide timely assistance and support, ensuring that our projects progressed smoothly and efficiently.

Your commitment to quality and safety standards is also commendable. We have full confidence in the reliability and durability of the electrical products and services provided by 3Phase Enterprises, knowing that they meet or exceed industry standards.

In summary, 3Phase Enterprises has truly been a valuable partner to our organization, and we are grateful for the positive impact you have had on our projects. We look forward to continuing our successful partnership and achieving even greater milestones together in the future.

Thank you once again for your exceptional service and dedication.

Warm regards,

Zain Khalid

Head Projects



LETTER OF COMMENDATION



KIPS COLLEGE

KASUR CAMPUS

Ref. KIC/198/18c

Date 07-3-24

Subject: Letter of Appreciation for Outstanding Service 3Phase Enterprises

Dear Mr. Abdul Waheed,

I am writing to express my sincere gratitude and appreciation for the exceptional service provided by your team at 3Phase Enterprises. Your dedication, professionalism, and attention to detail have significantly contributed to the success of our projects.

Your commitment to delivering high-quality products/services on time and within budget has not gone unnoticed. Your team's expertise and willingness to go above and beyond to meet our needs have been instrumental in helping us achieve our goals.

We value the strong partnership we have built with 3Phase Enterprises and look forward to continuing our collaboration in the future. Your consistent reliability and outstanding performance have set a benchmark for excellence in your industry.

Thank you once again for your outstanding service and unwavering commitment to excellence. We truly appreciate all that you do and look forward to many more years of successful partnership.

Warm Regards,

[Muhammad Naveed]

[Principal]

[Kips College Kasur Campus (Kasur)]

Near New Bus Terminal Ferozpur Road, Kasur.

Contact: 0305-4441139
0304-5347829

LETTER OF COMMENDATION



KASUR COLLEGE OF PHARMACY

Ref. No: WB-KCP-24

Date: 07-03-2024

Subject: Letter of Appreciation for Outstanding Service 3Phase Enterprises

Dear Mr. Abdul Waheed,

I am writing to express my sincere gratitude and appreciation for the exceptional service provided by your team at 3Phase Enterprises. Your dedication, professionalism, and attention to detail have significantly contributed to the success of our projects.

Your commitment to delivering high-quality products/services on time and within budget has not gone unnoticed. Your team's expertise and willingness to go above and beyond to meet our needs have been instrumental in helping us achieve our goals.

We value the strong partnership we have built with 3Phase Enterprises and look forward to continuing our collaboration in the future. Your consistent reliability and outstanding performance have set a benchmark for excellence in your industry.

Thank you once again for your outstanding service and unwavering commitment to excellence. We truly appreciate all that you do and look forward to many more years of successful partnership.

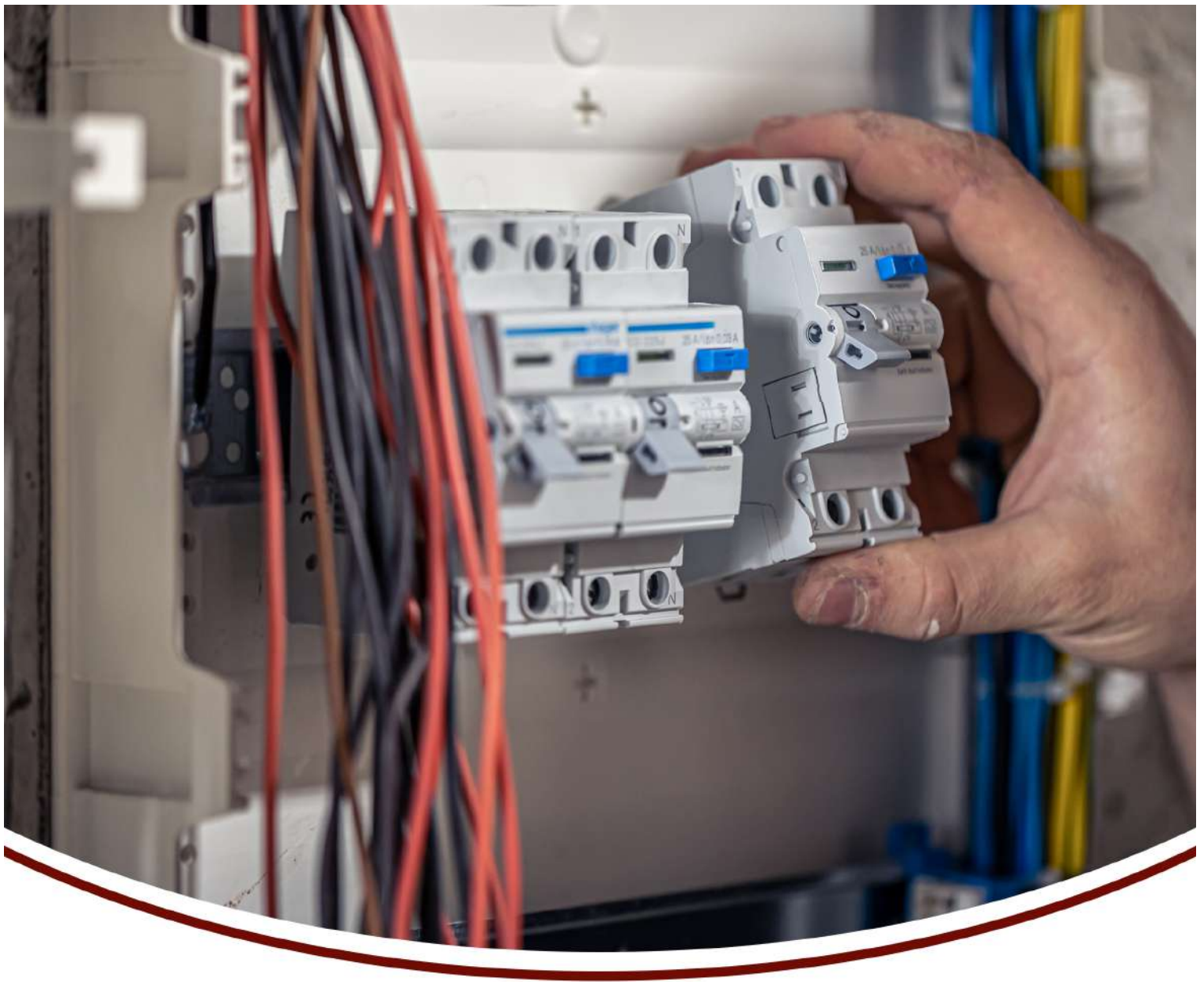
Warm Regards,

[Nadir Ali]

[CEO]

[Kasur College of Pharmacy]

Address: Near New Bus Terminal, Main Ferozpur Road, Kasur.
Kasur Campus: 0300-8010392, 0300-6597497, 0300-1769400



3PHASE ENTERPRISES



+92-303-5551555 / +92-324-7777666



3phaseenterprises.com.pk



info@3phaseenterprises.com.pk